



BAAL BONE COLLIERY

OPERATED BY THE WALLERAWANG COLLIERIES LTD



January to March 2013

Environmental Monitoring Summary



Table of Contents

1.0	Introduction	3
2.0	Air quality	3
2.1	Air Quality Impact Assessment Criteria	4
2.2	Depositional Rust Monitoring Results	4
2.3	Total Suspended Particulate Results	7
2.4	PM ₁₀ Results	7
3.0	Surface Water	8
3.1	Water Quality Concentration Limits	8
3.2	Water Quality Results	8
4.0	Groundwater	12
5.0	Noise	12
5.1	Noise Impact Assessment Criteria	13
5.2	Noise Audit Results	13

1.0 INTRODUCTION

In accordance with Schedule 5, Condition 9 of Project Approval 09_0178 this report provides a summary of environmental monitoring results for Baal Bone Colliery, for the period **1 January 2013 to 31 March 2013**. Baal Bone's licensed discharge and monitoring locations are identified in **Drawing 1** and **Drawing 2**. Noise monitoring locations are identified in **Drawing 3**. Results included in this summary include – air quality, surface water quality and dewatering bore flow rates.

2.0 AIR QUALITY

In accordance with Schedule 3, Condition 12 of Project Approval 09_0178 Baal Bone Colliery has developed an Air Quality Monitoring Program (AQMP). The Department of Planning approved the AQMP in correspondence dated 6 July 2011.

Monthly dust fall-out monitoring is carried out in accordance with Australian Standard AS3580.10.1, EPL requirements and Baal Bone's AQMP. Baal Bone has engaged ALS Group Environmental Division Mudgee, a NATA Accredited laboratory, to undertake monthly sampling, monitoring and analysis.

Baal Bone maintains a network of five dust deposition gauges to monitor dust levels around site and in the vicinity of the nearest neighbour, these are:

- Sample location DM1 (EPL monitoring point No. 7);
- Sample location DM2 (EPL monitoring point No. 13);
- Sample location DM3 (EPL monitoring point No. 14); and
- Sample location DM4 (EPL monitoring point No. 15).
- Sample location DM5 – installed 8 September 2011 (EPL monitoring point No. 16).

Particulate matter less than 10 µm in size (PM10) and high volume air sampler total suspended particulate (TSP) monitors were installed 23 October 2011 and 29 October 2011 respectively in accordance with a revised AQMP which was approved by the Department of Planning and Infrastructure in accordance with Project Approval 09_0178. The location of the TSP and PM10 monitors are situated at the same location as DM2.

In accordance with the AQMP, monitoring for PM10 and TSP was discontinued in June 2012. The monitoring was discontinued following Baal Bone mining operations entering care and maintenance in September 2011, and the completion of washing and transporting of coal off-site in December 2011 and April 2012 respectively.

Locations of all air quality monitoring gauges are shown in **Drawing 1**.

2.1 Air Quality Impact Assessment Criteria

Schedule 3, Condition 10 of Project Approval 09_0178 includes air quality impact assessment criteria for the project which are summarised in **Table 2.1** below. The pollutants to be monitored include deposited dust, TSP and PM₁₀.

Table 2.1: Baal Bone Air Quality Impact Assessment Criteria

Pollutant	Averaging period	Criterion	
Deposited dust	Annual	Maximum increase	Maximum total
		2 g/m ² /month	4 g/m ² /month
TSP	Annual	90 µg/m ³	
PM ¹⁰	24 hour	50 µg/m ³	
	Annual	30 µg/m ³	

2.2 Depositional Rust Monitoring Results

Levels of deposited dust at Baal Bone's five gauges were below 4g/m²/month during the reporting period (refer to **Table 2.2**). Dust levels at all five gauges satisfied the criterion outlined in Project Approval 09_0178.

Figures 2.1 to 2.5 provide monthly results for each depositional dust gauge for 2013.

Table 2.2: Deposited dust monitoring results for 2013 (g/m²/month)

Month	DM1	DM2	DM3	DM4	DM5
January	0.7	0.4	0.9	0.8	2.1
February	0.6	0.7	0.5	0.5	0.5
March	0.3	0.1	<0.1	0.1	0.4

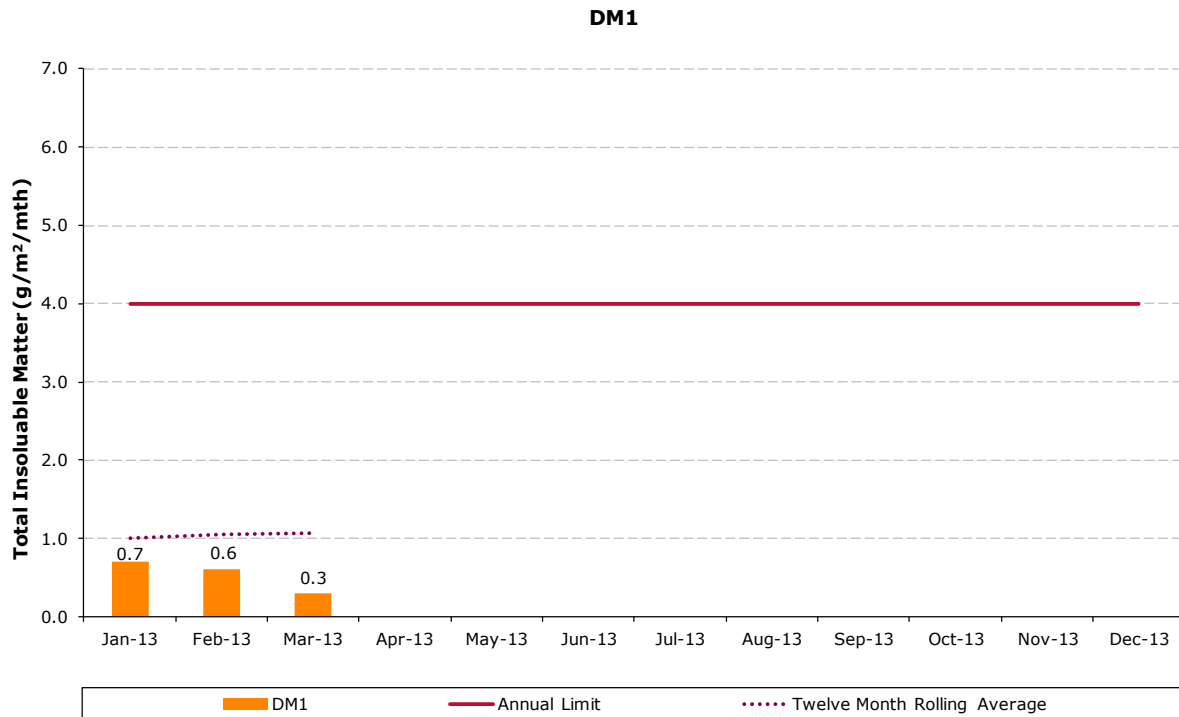


Figure 2.1: Dust monitoring gauge DM1 (EPL monitoring point No. 7)

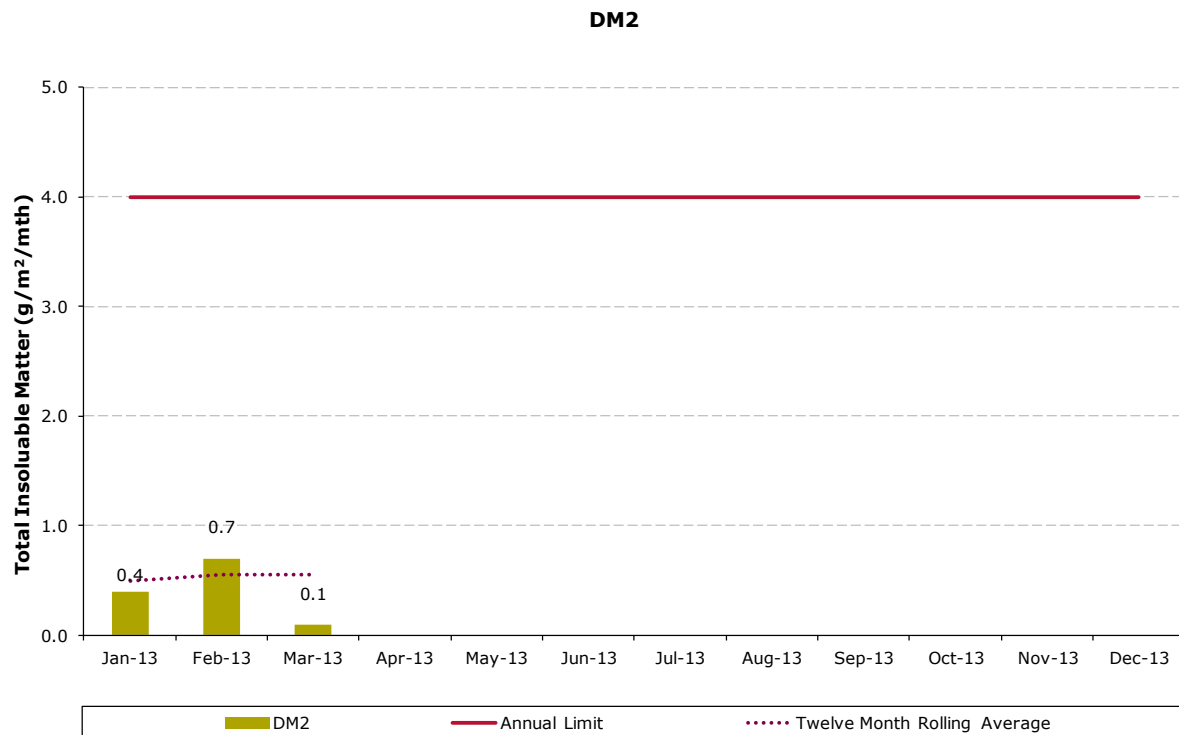


Figure 2.2: Dust monitoring gauge DM2 (EPL monitoring point No. 13)



DM3

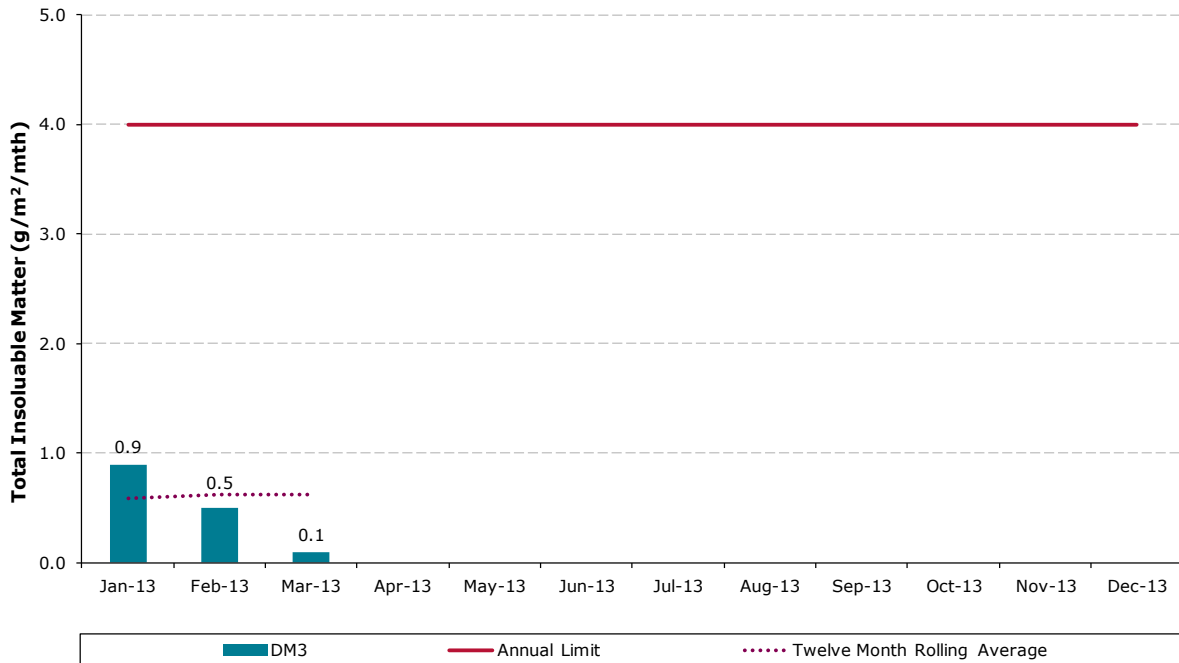


Figure 2.3: Dust monitoring gauge DM3 (EPL monitoring point No. 14)

DM4

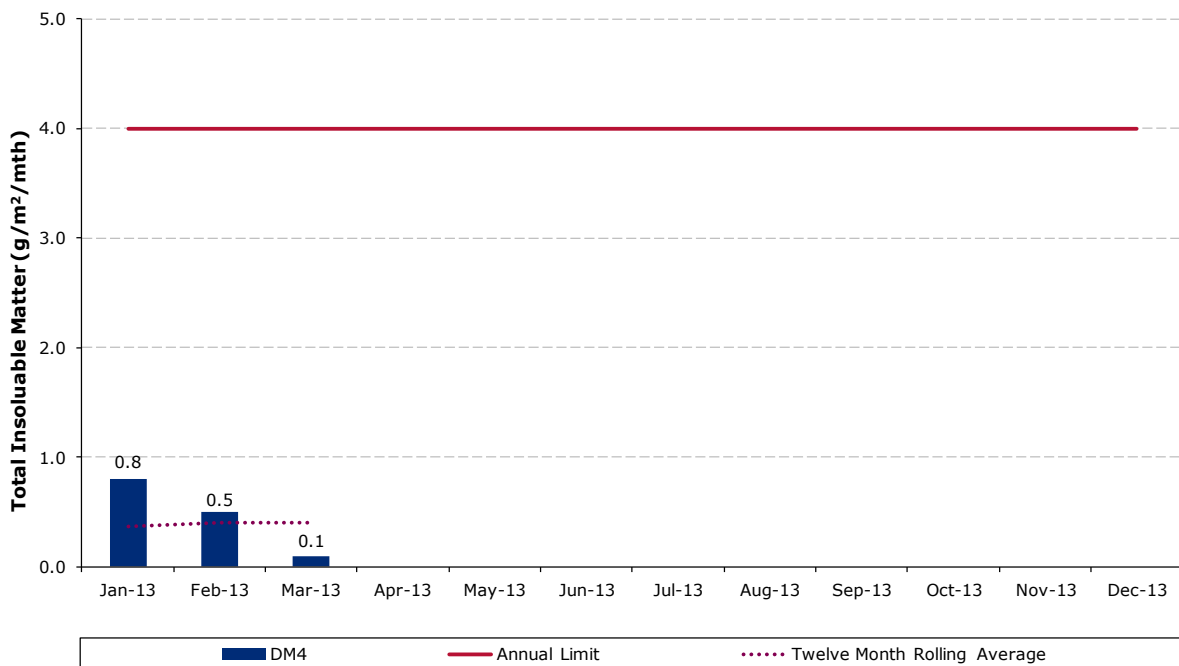


Figure 2.4: Dust monitoring gauge DM4 (EPL monitoring point No. 15)

DM5

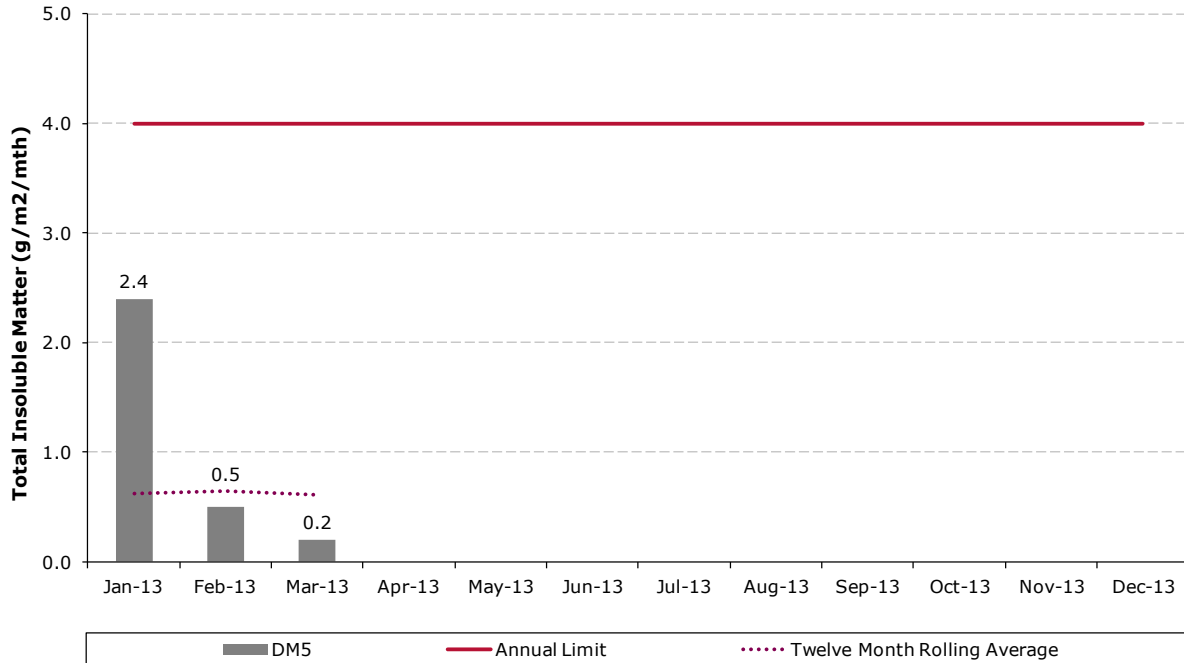


Figure 2.5: Dust monitoring gauge DM5 (EPL monitoring point No. 16)

2.3 Total Suspended Particulate Results

A high volume air sampler (HVAS) was installed in October 2011 to monitor total suspended particulates (TSP) at one location: DM2. The HVAS ran on a six-day cycle in accordance with EPA/OEH requirements.

In accordance with the DoPI approved Air Quality Monitoring Program, monitoring for TSP was discontinued in June 2012. The monitoring was discontinued following Baal Bone mining operations entering care and maintenance in September 2011, and the completion of coal washing and transporting of coal off-site in December 2011 and April 2012 respectively.

2.4 PM₁₀ Results

A Tapered Element Oscillating Microbalance Analyser (TEOM) was installed in October 2011 to measure particulate matter up to 10 microns in diameter (PM₁₀) at one location: DM2.

In accordance with the DoPI approved Air Quality Monitoring Program, monitoring for PM₁₀ was discontinued in June 2012. The monitoring was discontinued following Baal Bone mining operations entering care and maintenance in September 2011, and the completion of washing and transporting of coal off-site in December 2011 and April 2012 respectively.

3.0 SURFACE WATER

Baal Bone has engaged ALS Group Environmental Division Mudgee, a NATA Accredited laboratory, to undertake monthly sampling, monitoring and analysis of a range of surface and subsurface waters.

Baal Bone maintains a network of five licensed discharge and monitoring points in accordance with EPL 765 (viz. LD2, LD3, LD6, LDP1 and WMP1)(Drawing 1 and Drawing 2).

A copy of EPL 765 can be accessed here:

<http://www.environment.nsw.gov.au/prpoeoapp/ViewPOEOLicence.aspx?DOCID=32193&SY SUID=1&LICID=765>.

3.1 Water Quality Concentration Limits

Condition L2 of EPL 765 outlines water concentration limits for oil and grease, pH, total suspended solids and total iron. These limits are presented below in **Table 3.1**.

Table 3.1: EPL concentration limits

	LD2	LD3	LD6	LDP1	WMP1
Oil and grease (mg/L)	-	10	10	10	-
pH	-	6.5-8.5	6.5-8.5	6.5-8.5	-
Total Suspended Solids (mg/L)	-	50	50	50	-
Total Iron (mg/L)	-	-	1.0	1.0	-

3.2 Water Quality Results

Monitoring results for Baal Bone’s five licensed discharge and monitoring points as required by EPL 765 are presented below in **Table 3.2**.

Table 3.2: EPL Water quality results for the reporting period

EPL Point	Month	EC uS/cm	O&G mg/L	SO ²⁻ ₄ mg/L	Fe mg/L	TSS mg/L	pH	BOD mg/L	Faecal Coliforms cos/100 mls	N mg/L	P mg/L
LD2 ^a	Jan	-	-	-	-	-	-	-	-	-	-
	Feb	-	-	-	-	-	-	-	-	-	-
	Mar	-	-	-	-	-	-	-	-	-	-
LD3	Jan	1360	<2	334	3.54	6	7.1	-	-	-	-
	Feb	1530	<5	320	<0.05	60	7.0	-	-	-	-
	Mar	1500	2	280	3.48	4	6.9	-	-	-	-
LD6	Jan	1420	<2	419	0.61	5	7.6	-	-	-	-
	Feb	1510	<5	418	<0.05	85	7.5	-	-	-	-
	Mar	1410	2	317	0.4	<2	7.5	-	-	-	-
LDP1	Jan	1010	<2	387	0.36	2	8.0	-	-	-	-
	Feb	900	<5	280	<0.05	4	7.3	-	-	-	-
	Mar	980	2	289	0.31	2	7.9	-	-	-	-
WMP 1 ^b	Jan	-	-	-	-	-	-	-	-	-	-
	Feb	-	-	-	-	-	-	-	-	-	-
	Mar	-	-	-	-	-	-	-	-	-	-

Notes

- (a) No samples taken at LD2 during 2013 to date as sample location was dry
(b) No samples taken at WMP1 during 2013 to date as no flow at sample location

Legend

BOD = Biological oxygen demand

EC = Electrical conductivity

Fe = Iron

N = Nitrogen

Highlighted cells = Results exceed EPL concentration limits

O & G = Oil and Grease

P = Phosphorus

SO²⁻ = Sulfate

4

TSS = Total suspended solids

Figures 3.1 to 3.4 provide monthly water quality results compared to EPL concentration limits.

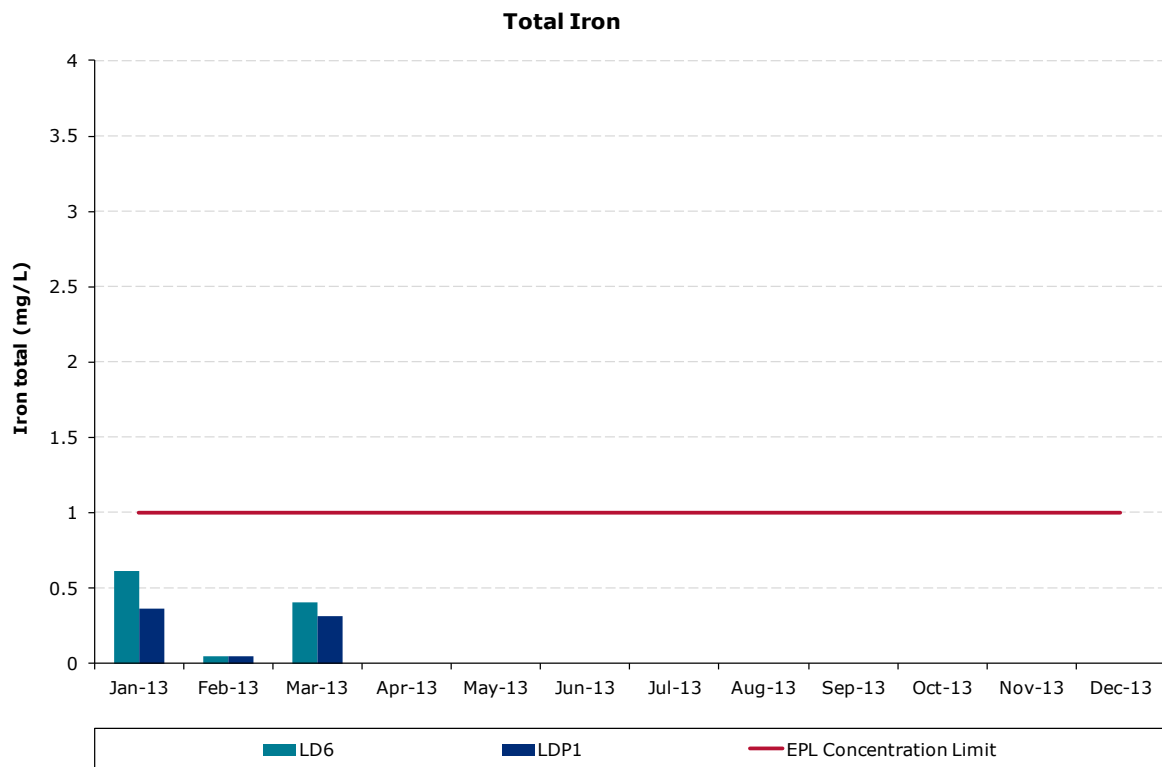
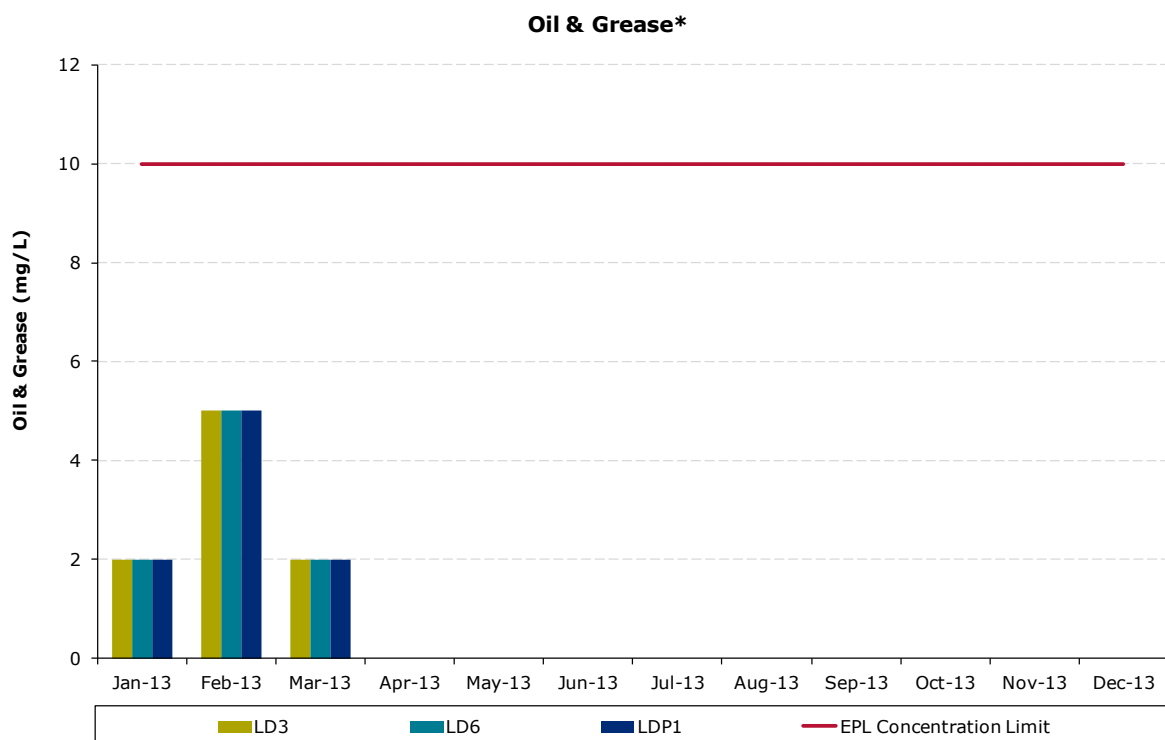


Figure 3.1: Total iron levels



Notes:
* Some values shown as 2 were reported as being <2 (Refer to Table 3.2).

Figure 3.2: Oil and grease levels

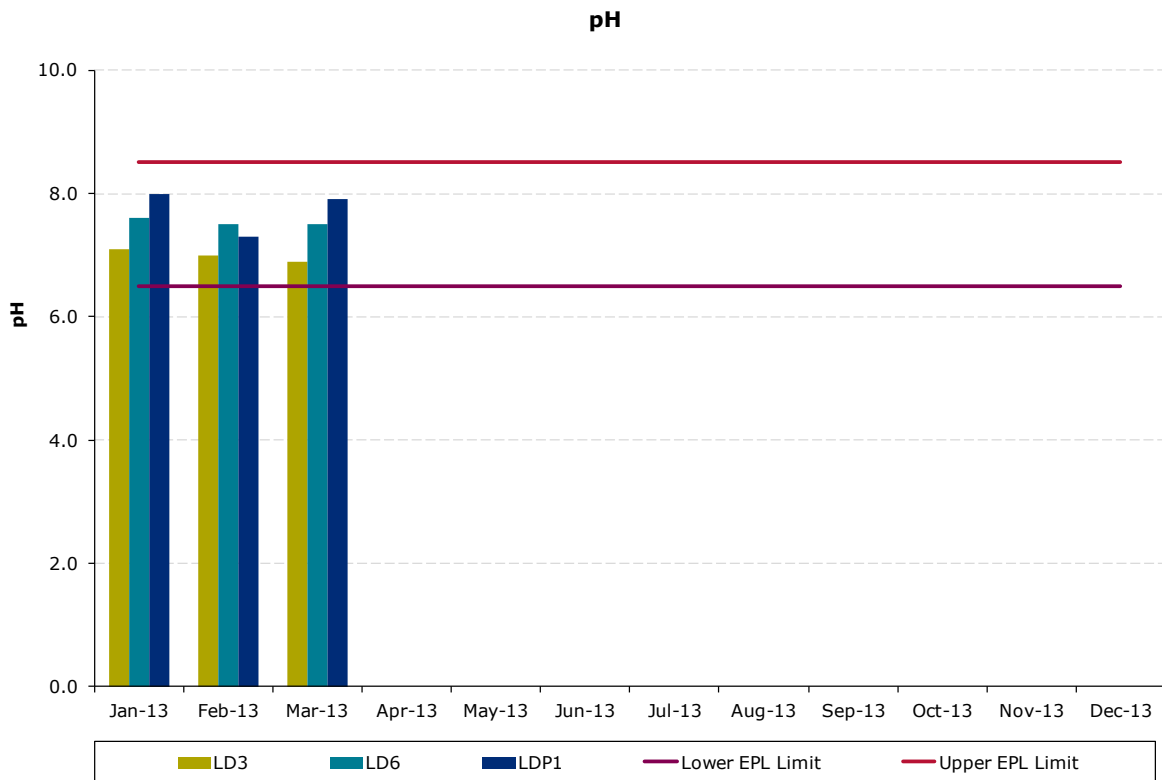


Figure 3.3: pH levels

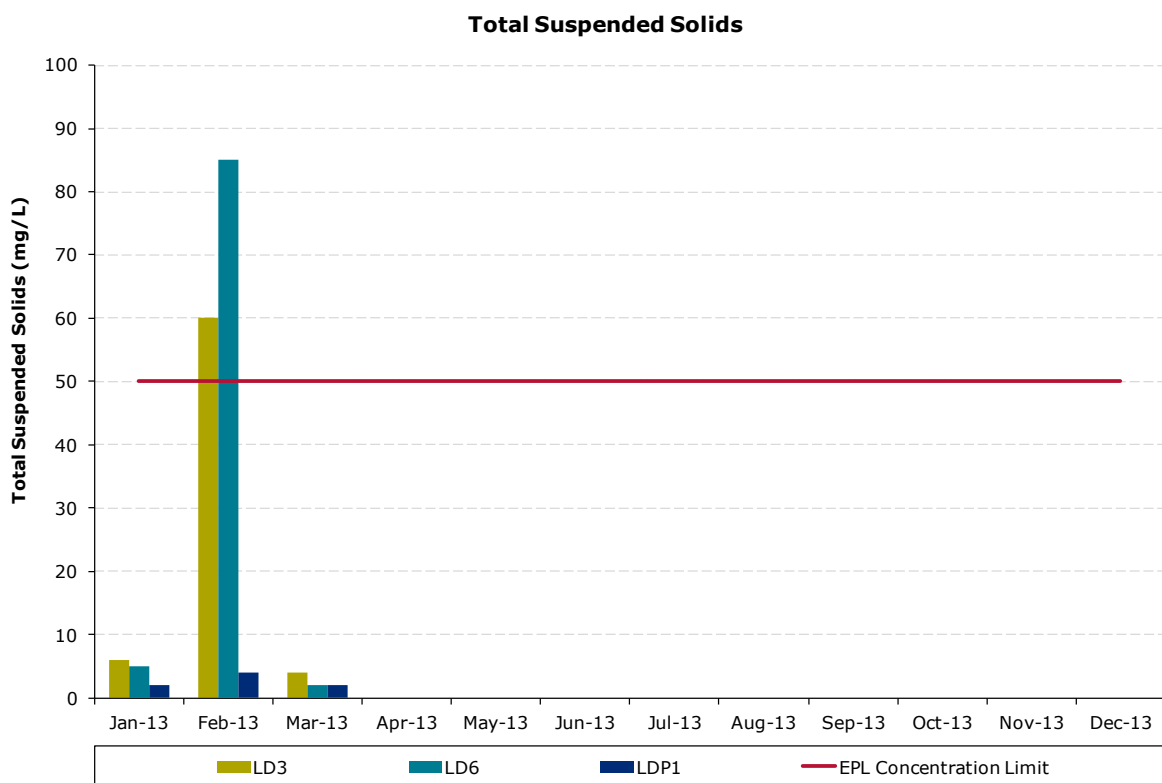


Figure 3.4: Total suspended solids levels

All samples recorded were within EPL concentration limits during the reporting period, with the exception of TSS results at LD3 and LD6. In February 2013 LD3 returned a TSS result of 60 mg/L and LD6 returned a TSS result of 85 mg/L – both above the EPL concentration limit of 50 mg/L. An investigation into the cause of the elevated levels of TSS was unable to determine a cause. Future water monitoring results will continue to be reviewed.

Summary of Investigation Findings:

- Sampling upstream and downstream of LD3 and LD6 (internal monitoring points BBLW19 Sed Dam and BBJC3) returned TSS levels of <2 mg/L in February 2013.
- Weather data showed very little rainfall in the 5 days prior to the sampling.
- A review of historical data from 2011 onwards shows that there have been no exceedances of TSS concentration limits at LD3 or LD6 in at least the past two years, with the highest reading at either licensed discharge point being 12 mg/L at LD3 in April 2011.
- March 2013 sampling showed a return to low levels of TSS 4mg/L and <2 mg/L recorded for LD3 and LD6 respectively.

A summary of other monitoring results for EPL discharge and monitoring points compared against specified concentration limits during the January 2013 to March 2013 period can be found below:

- The highest iron sample for the period was 0.61 mg/L (recorded at LD6 in January 2013), well below the concentration limit of 1 mg/L.
- All samples for oil and grease at returned levels of 5 mg/L or less, well below the EPL concentration limit of 10 mg/L.
- All samples returned pH results that were within the upper and lower EPL limits (8.5 and 6.5 respectively).

Monthly EPL reporting can be accessed here:

<http://www.xstratacoal.com/EN/Operations/Baalbone/Pages/EPLreportingBaalBone.aspx>

4.0 GROUNDWATER

Condition L3.1 of EPL 765 specifies a discharge volume limit of 12 ML per day at LD6.

During the January to March 2013 period, discharges from LD6 did not exceed the daily limit, with an average daily discharge at LD6 of 3.3 ML per day, and a maximum daily discharge of 3.9 ML.

5.0 NOISE

Baal Bone Colliery has developed a Noise Management Plan (NMP) in accordance with Schedule 3, Condition 6 of Project Approval 09_0178. The NMP was approved by the Department of Planning in correspondence dated 11 November 2011.

As per the NMP Baal Bone Colliery operates a real time noise monitor at location R2. In addition to real time noise monitoring (which is supplementary to regulatory measurements), from 2013 onwards attended monitoring is undertaken on an annual basis at receptors R1 and R2/R3 (refer to Drawing 3).

5.1 Noise Impact Assessment Criteria

Schedule 3, Condition 4 of Project Approval 09_0178 includes long term noise impact assessment criteria. Table 5.1 outlines the assessment criteria.

Table 5.1: Long term noise impact assessment criteria

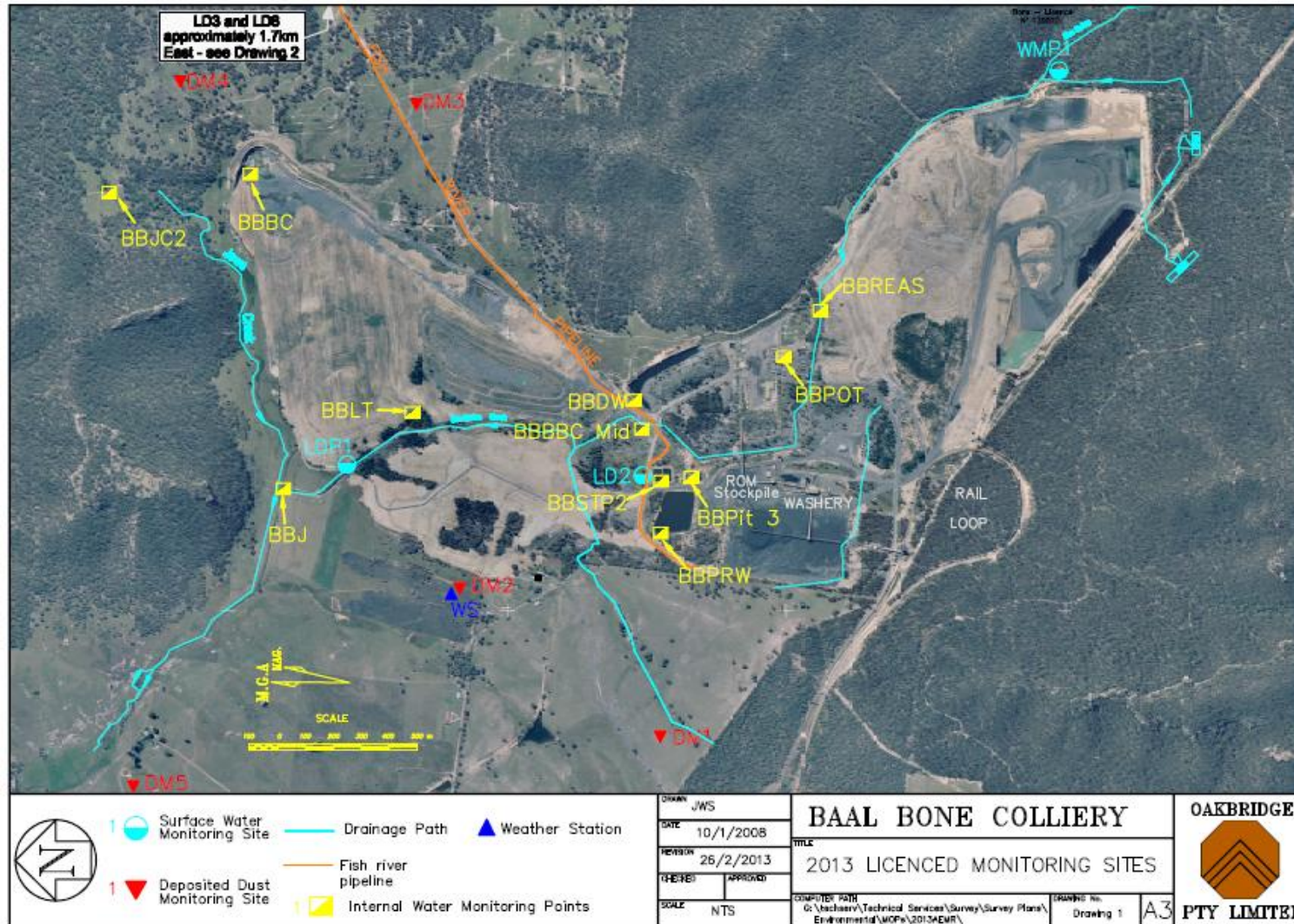
Location	All periods dB(a) $L_{Aeq}(15 \text{ min})$	Night dB(a) $L_{A1}(1 \text{ min})$
R1	46	47
R2	41	48
R3	41	48
All other privately-owned land	35	45

5.2 Noise Audit Results

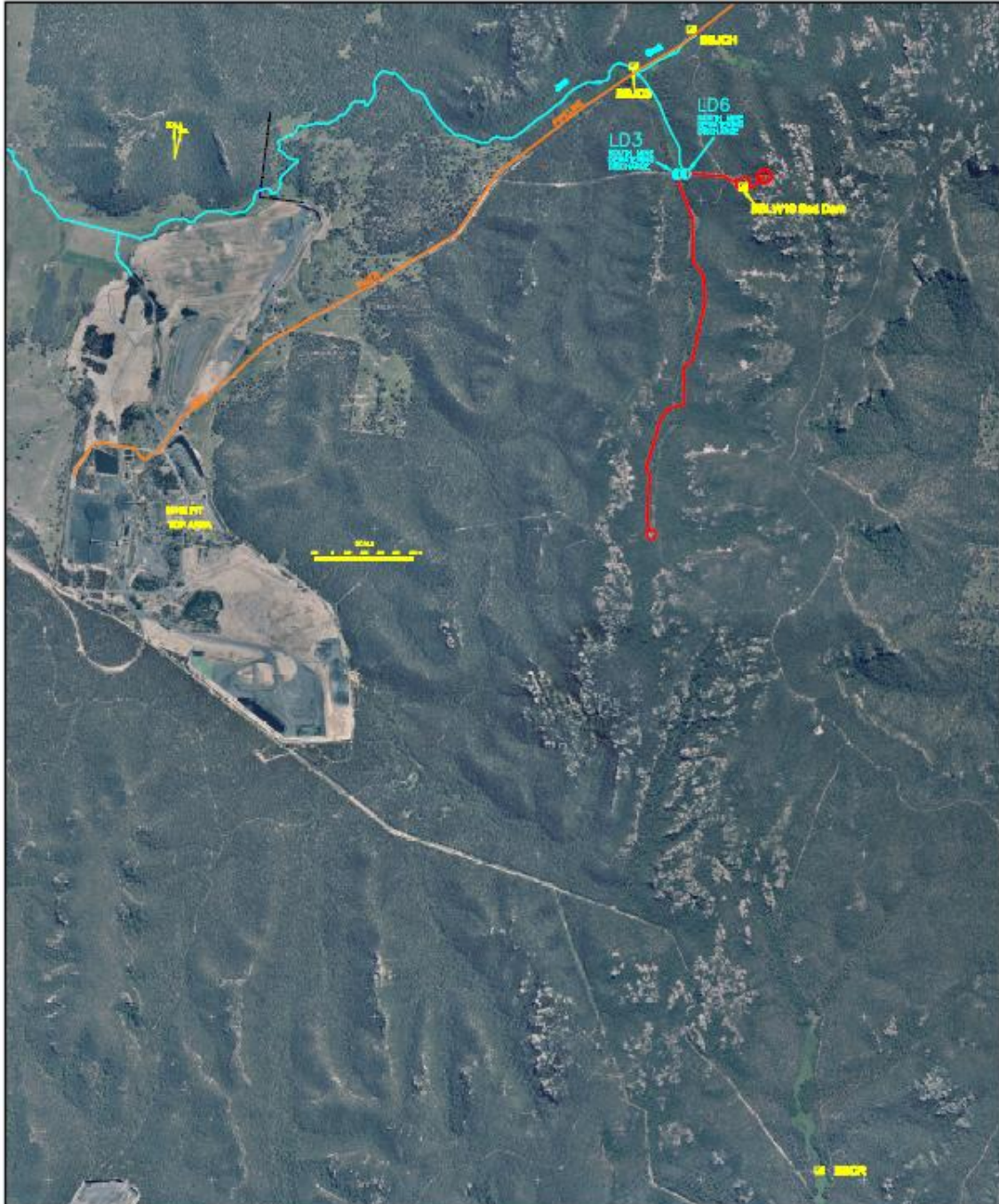
There were no attended noise audits carried out during the reporting period.


Previous noise audit reports can be accessed from the Baal Bone publications page at: <http://www.xstratacoal.com/EN/Operations/Baalbone/Pages/BaalBonePublicationsArchive.aspx>.

Drawing 1



Drawing 2



DRAWN JWS		BAAL BONE COLLIERY		OAKBRIDGE	
DATE 26/2/2013					
CHECKED		2013 LICENCED MONITORING SITES			
APPROVED					
SCALE NTS	REVISION	COMPUTER PATH G:\techserv\Technical Services\Survey\Survey Plans\ Environmental\MOPs\2013AEMR\	DRAWING No. - Drawing 2	A3	PTY LIMITED

Drawing 3

