

BAAL BONE COLLIERY
Subsidence Management Status Report
LW 29 - 31

Four Monthly Update

REPORT No. 1

For the period:
7th December 2007 to 7th April 2008

Approved by David Hetherington
Manager, Mining Engineering
Baal Bone Colliery

TABLE OF CONTENTS

1	INTRODUCTION	3
2	PURPOSE AND SCOPE	3
3	FACE POSITION OF THE LONGWALL	3
4	SUBSIDENCE MANAGEMENT ACTIONS	3
5	CONSULTATION WITH STAKEHOLDERS	3
6	SUBSIDENCE DEVELOPMENT AND OBSERVED SUBSIDENCE IMPACTS	3
6.1	Subsidence Impacts	3
6.2	Subsidence Development (Survey results summary)	6
7	ADEQUACY, QUALITY AND EFFECTIVENESS	6
8	PROPOSED ADDITIONAL/ OUTSTANDING MANAGEMENT ACTIONS	6
9	CONCLUSIONS	6

FIGURES

- Figure 1 Coxs River Swamp Groundwater Levels (2007)
- Figure 2 Coxs River Swamp Groundwater Levels (2008)
- Figure 3 Environmental Monitoring Sites as at 4/5/07
- Figure 4 Surface Drainage Features and Fire Trail Inspection Locations

1 INTRODUCTION

This Subsidence Status Management Report fulfils the requirements of Condition 19 of the Baal Bone Subsidence Management Plan (SMP) Longwalls 29 to 31 Approval Conditions. This is the initial report and covers the period 7th December 2007 to 7th April 2008; it also captures baseline surveys and studies that have been ongoing prior to SMP approval in December 2007.

2 PURPOSE AND SCOPE

The purpose of this document is to report the progress of mining, provide a summary of subsidence impacts, the implemented management processes and consultation with relevant stakeholders. It also provides the opportunity for relevant stakeholders to provide feedback as required under Condition 19.

3 FACE POSITION OF THE LONGWALL

Longwall production in the SMP area has not commenced. Longwall 29 extraction is not scheduled to commence until January 2009.

4 SUBSIDENCE MANAGEMENT ACTIONS

Subsidence management actions undertaken throughout the four month period since approval on 7th December 2007 are outlined below.

To date, no subsidence management actions are required as the longwall production in the SMP area has not commenced.

5 CONSULTATION WITH STAKEHOLDERS

A Review Schedule was developed as part of the SMP application. The objective of the Review Schedule is to provide a process to ensure regular feedback regarding the management/monitoring undertaken for the SMP and to provide a mechanism for feedback from interested parties.

To date no consultation with stakeholders has been required.

6 SUBSIDENCE DEVELOPMENT AND OBSERVED SUBSIDENCE IMPACTS

6.1 Subsidence Impacts

To date, no subsidence impacts have occurred in the SMP area as the longwall production has not commenced. Environmental monitoring locations are shown in **Figure 2**.

6.1.1 Wolgan escarpment

Baseline photographic monitoring of the Wolgan Escarpment took place on the 3/3/2008 by Skycam Australia.

6.1.2 Rock features

Baseline photographic monitoring of rock features in the SMP application area took place on the 4/3/2008-5/3/2008 by Western Environmental Services.

6.1.3 Surface watercourses/ Drainage structures

Baseline photographic monitoring of the condition of watercourses and drainage features in the SMP application area took place on the 4/3/2008-5/3/2008 by Western Environmental Services.

6.1.4 Fire Trails and Tracks

Baseline photographic monitoring of the fire trails and access tracks covering the SMP application area took place on the 4/3/2008-5/3/2008 by Western Environmental Services. The location of the trails in the SMP application area is shown in **Figure 4**.

6.1.5 Swamp

Baseline seasonal photographic monitoring of the Coxs River Swamp has been undertaken November 2007 by Baal Bone employees; it was undertaken again on the 4/3/2008 - 5/3/2008 by Western Environmental Services.

6.1.6 Fauna

Prior to SMP approval, four baseline seasonal fauna surveys were completed by *Mount King Ecological Surveys*. Results from these surveys indicate that the dominant habitat type within the SMP application area is woodland. Mount King Ecological Surveys suggested a number of indices that can be used which will provide sensitive measures of any changes in the SMP Area including percentage of bird species, species richness and habitat complexity score.

6.1.7 Flora

Prior to SMP approval, four baseline flora surveys were completed by *Gingra Ecological Surveys*. Results from these surveys indicate that the vegetation in the SMP area is characterised by typical examples of Tablelands Sheltered Valley Forest, Tablelands Dry Ridgetop Woodland or Tablelands Dry Woodland. No threatened plant species were found within the SMP area.

6.1.8 Underground water make

Data continues to be collected from the mines flow meters and data loggers regarding mines water discharges and underground water storage levels. This data is currently being used to establish and calibrate a mine water make model prior to commencement of extraction of LW 29.

6.1.9 Ground water

Connell Wagner monitors the six piezometers on a bimonthly basis to gather baseline data regarding groundwater level fluctuations. To date, the data obtained (shown in **Figure 1 & 2**) confirms a strong correlation between groundwater levels and prevailing climatic conditions; most particularly the relationship to rainfall. To date, there has been no abnormal behaviour of groundwater depth compared to climatic data.

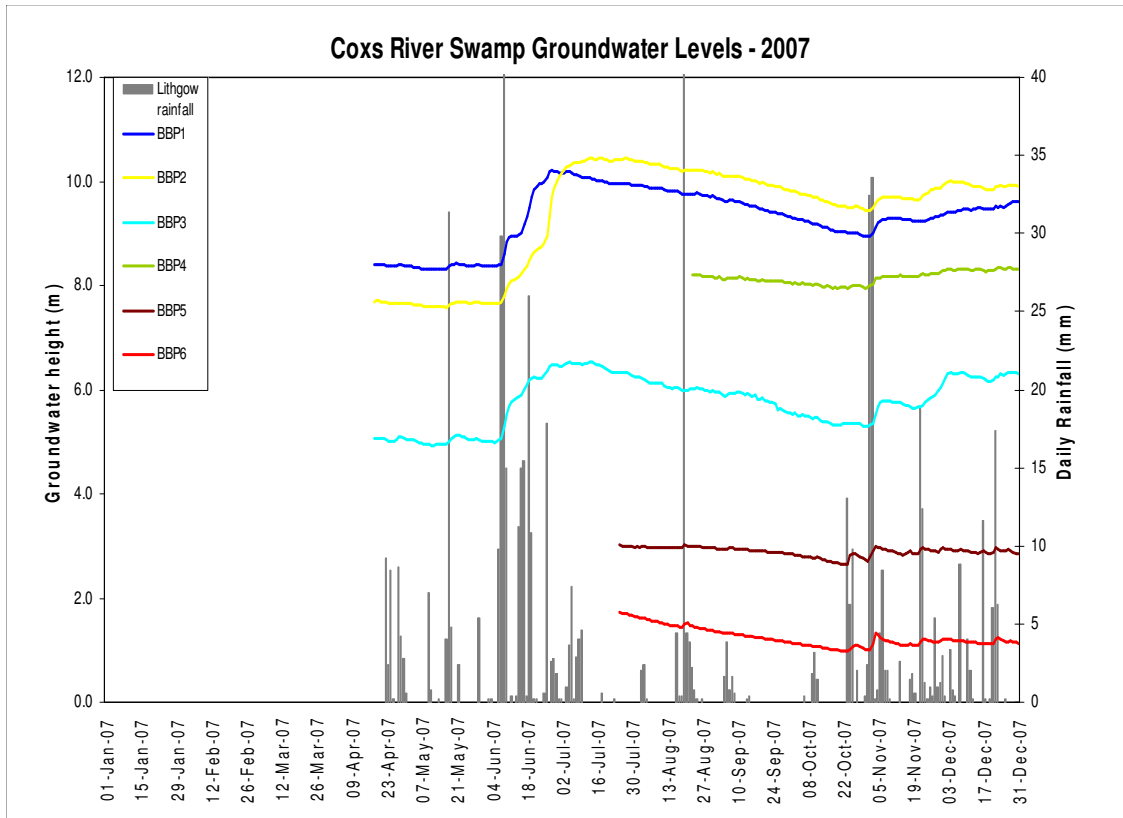


Figure 1: Coxs River Swamp Groundwater levels (2007)

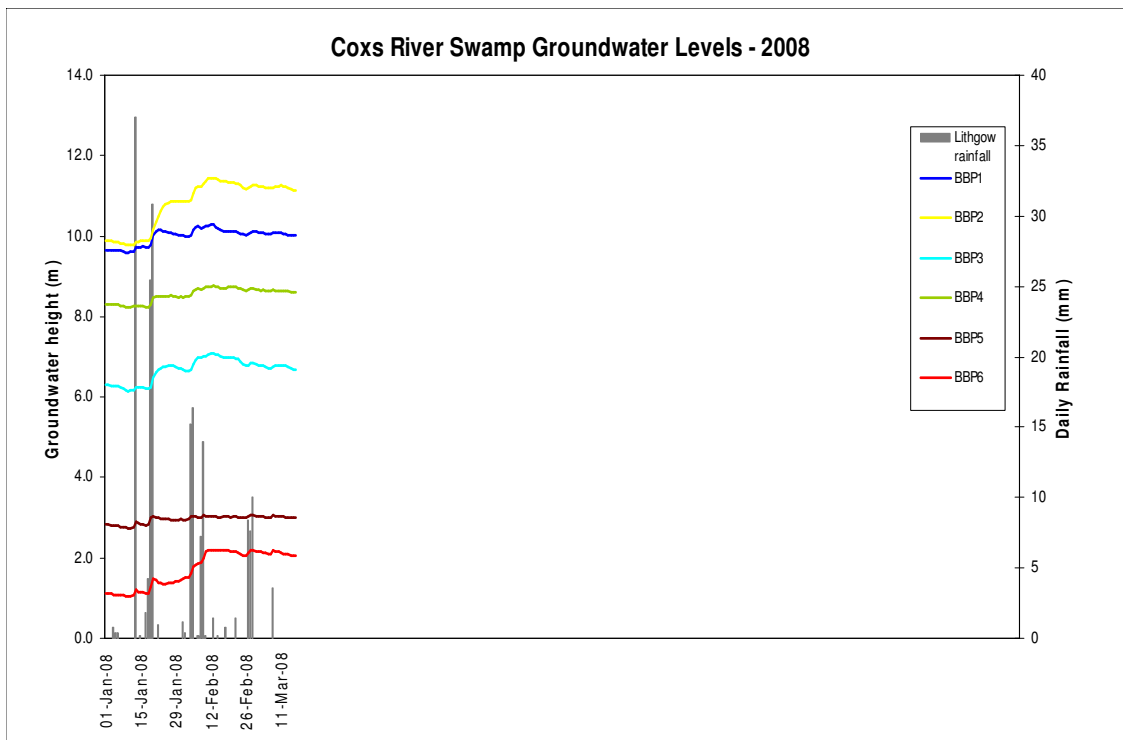


Figure 2: Coxs River Swamp Groundwater levels (2008)

6.2 Subsidence Development (Survey results summary)

To date, there has been no subsidence development as longwall production in the SMP area has not commenced.

7 ADEQUACY, QUALITY AND EFFECTIVENESS

The adequacy, quality, effectiveness of the implemented management processes based on compliance with approval conditions is considered to be satisfactory to date.

8 PROPOSED ADDITIONAL/ OUTSTANDING MANAGEMENT ACTIONS

To date, no additional management actions are required nor is there any need for early responses or emergency procedures to be undertaken as there have been no negative subsidence impacts due to the extraction of the subject longwalls.

9 CONCLUSIONS

There is no requirement to instigate any additional actions as longwall mining of the SMP area has not commenced.

The review of existing and development of required Management Plans and programs is continuing to ensure compliance with the SMP Approval Conditions.

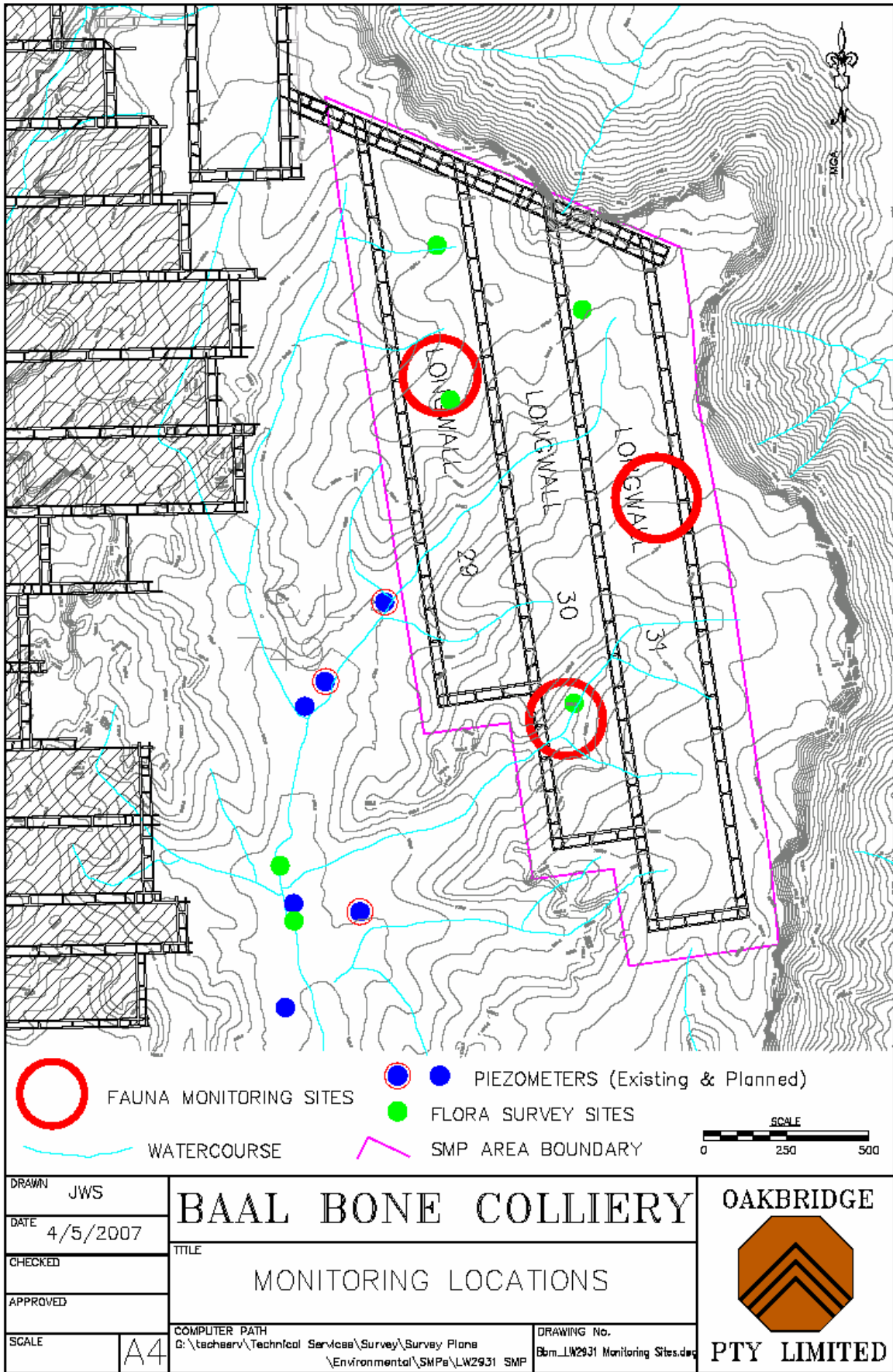
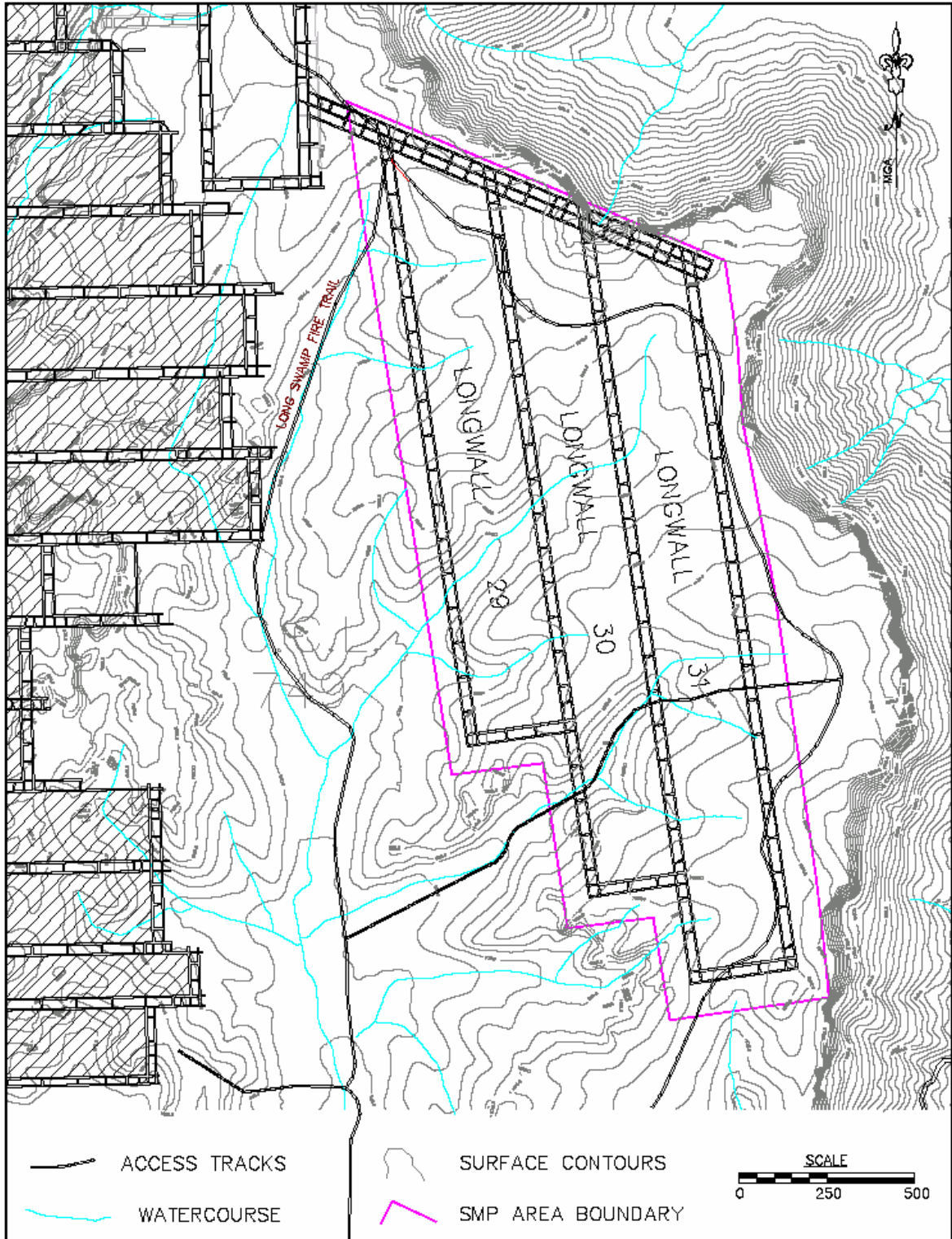


Figure 3: Environmental Monitoring Sites as at 04.05.07



DRAWN JWS	BAAL BONE COLLIERY	OAKBRIDGE
DATE 4/5/2007		
CHECKED	TITLE SURFACE FEATURES & TRAILS	 PTY LIMITED
APPROVED	COMPUTER PATH G:\technserv\Technical Services\Survey\Survey Plans \Mining\LW29-31\SMP Plans	
SCALE A4	DRAWING No. Bbrn_LW2931 Tracks.dwg	

Figure 4: Surface Drainage Features and Fire Trail Inspection Locations