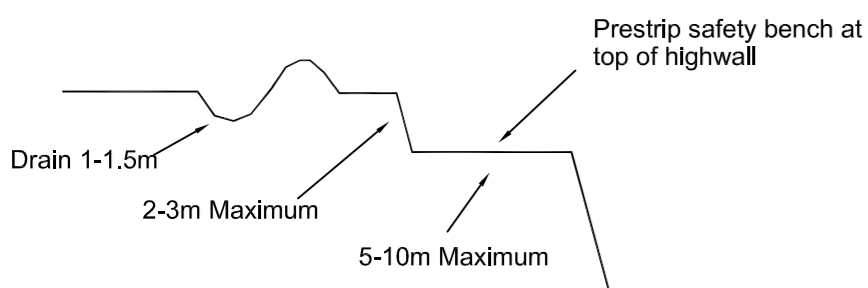
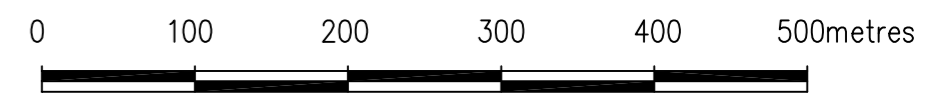
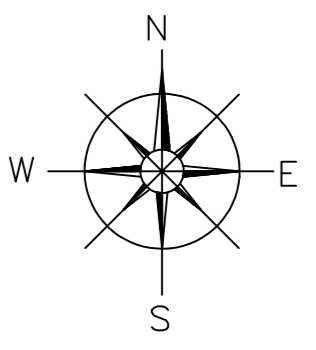


**Highwall Treatment**



**DIAGRAM A**



**LEGEND**

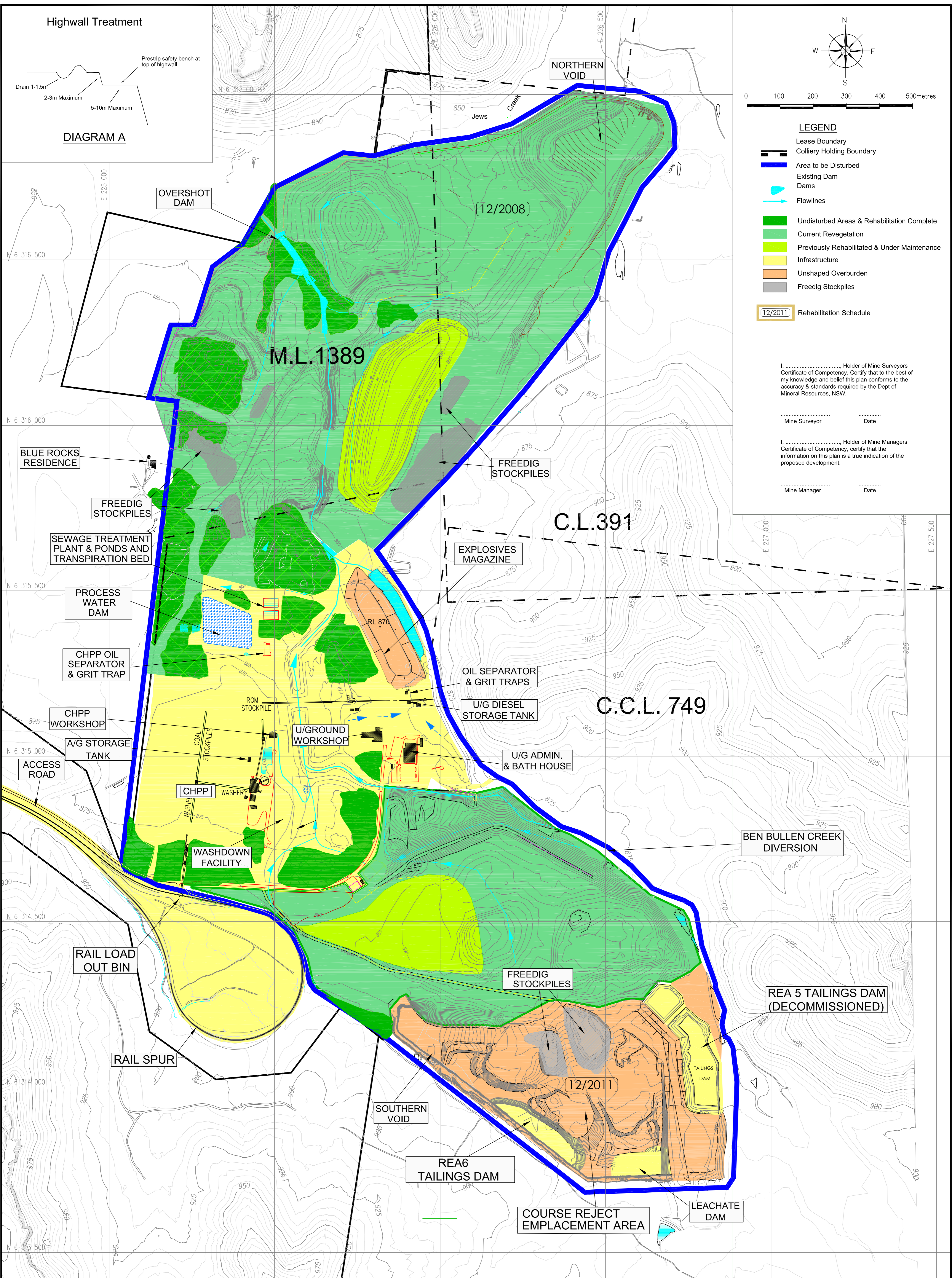
- Lease Boundary
- Colliery Holding Boundary
- Area to be Disturbed
- Existing Dam
- Dams
- Flowlines
- Undisturbed Areas & Rehabilitation Complete
- Current Revegetation
- Previously Rehabilitated & Under Maintenance
- Infrastructure
- Unshaped Overburden
- Freedig Stockpiles
- Rehabilitation Schedule

I, ..... Holder of Mine Surveyors Certificate of Competency, Certify that to the best of my knowledge and belief this plan conforms to the accuracy & standards required by the Dept of Mineral Resources, NSW.

..... Mine Surveyor ..... Date

I, ..... Holder of Mine Managers Certificate of Competency, certify that the information on this plan is a true indication of the proposed development.

..... Mine Manager ..... Date



REV.	DATE	BY	DESCRIPTION	CHK.
E	10.02.09	JS	Updated Rehabilitation Areas & Schedule	TK
D	01.02.08	JS	Updated Rehabilitation Areas & Schedule	TK
C	23.08.07	JS	Updated Rehabilitation Areas & Schedule	TK
B	07.07.06	NM	Legend Updated and Water Management Clarified.	PB
A	June 06	TB	Issued Drawing	JF

Computer Path: G:\techserv\Technical Services\Survey\Survey Plans\ Environmental\MOPs\2008AEMR\BB 2008 AEMR-PLAN1.dwg

<b>BAAL BONE COLLIERY</b>					Job
2008 Baal Bone Annual Environmental Report					Dwg No.
Plan 1 - Mining Activities and Surface Facilities Site Plan					Rev. E
Date 10.02.2009	Scale: 1:5000	Drawn JWS	Checked TK	Approved JH	Sheet A1