

- LEGEND**
- Lease Boundary
 - Colliery Holding Boundary
 - Proposed Extraction Approval Area
 - Current Extraction Approval Area
 - Area to be Disturbed
 - Section Location

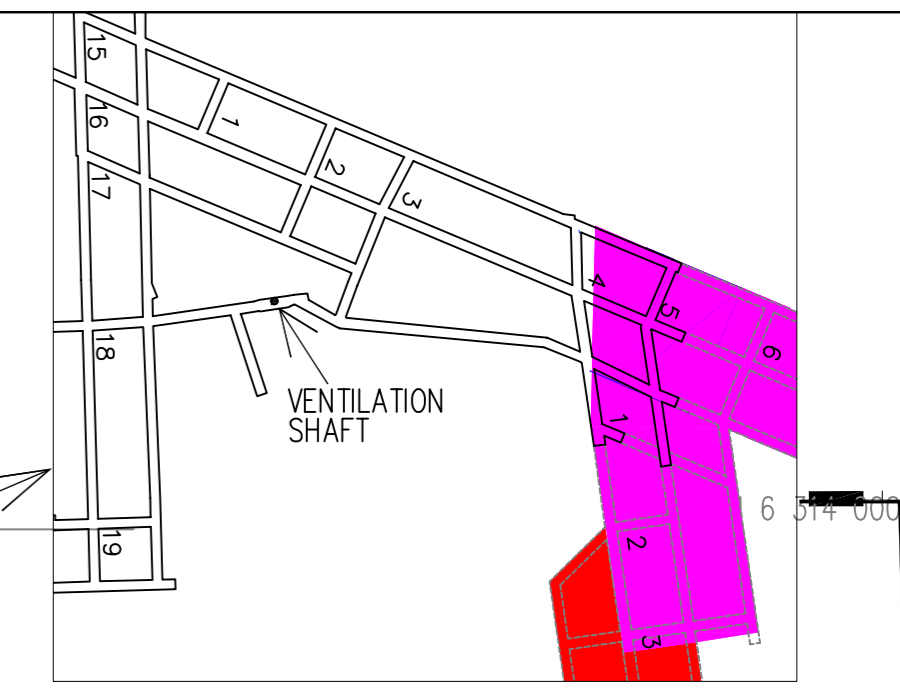
- MINING SEQUENCE**
- | | |
|-----------|-----------|
| █ Q1 2008 | █ Q3 2009 |
| █ Q2 2008 | █ Q4 2009 |
| █ Q3 2008 | █ Q1 2010 |
| █ Q4 2008 | █ Q2 2010 |
| █ Q1 2009 | █ Q3 2010 |
| █ Q2 2009 | █ Q4 2010 |

I, Holder of Mine Surveyors Certificate of Competency, Certify that to the best of my knowledge and belief this plan conforms to the accuracy & standards required by the Dept of Mineral Resources, NSW.

.....
Mine Surveyor Date

I, Holder of Mine Managers Certificate of Competency, certify that the information on this plan is a true indication of the proposed development.

.....
Mine Manager Date



REV.	DATE	BY	DESCRIPTION	CHK.
E	01.02.08	JS	Proposed Underground Workings - Including South East Longwall Blocks - Amended	TK
D	23.08.07	JS	Proposed Underground Workings - Including South East Longwall Blocks	TK
C	10.07.06	NM	Proposed Underground Workings - Consistant with Revision A.	PB
B	07.07.06	NM	Base Updated.	PB
A	June 06	TB	Issued Drawing	JF

Computer Path: G:\techserv\Technical Services\Survey\Survey Plans\Environmental\MOPs\2007AEMR\BB 2007 AEMR-PLAN2.dwg

BAAL BONE COLLIERY					Job C9/11
2007 Baal Bone Annual Environmental Report					Dwg No. 01588
Plan 2 - Mining Activities and Site Plan - Underground					Rev. E
Date 01.02.2008	Scale: 1:10000	Drawn JWS	Checked TK	Approved DH	Sheet A1